

**MECHANICAL ENGINEERING DRAWING-I**  
**3<sup>rd</sup> Exam/Mech./9053/Jun'2021**  
**(For 2018 Batch onwards)**

**Duration: 1.15Hrs.**

**M.Marks:25**

**Note: If any dimension is not clear/Missing, assume proportionate value for the same**

**SECTION-A**

**Q1 Attempt any two questions.**

**2x5=10**

- a. Discuss various types of tolerance.
- b. Explain clearance and its types.
- c. What is allowance? Explain its types.
- d. Draw freehand sketch of V-belt pulley.
- e. Draw wiring diagram to control one lamp and one fan.
- f. Draw freehand sketch of ball and roller bearing.

**SECTION-B**

**Q2 Attempt any one question.**

**1x15=15**

- i. A right circular cylinder of 50 mm diameter and height 70 mm, is resting on its base on horizontal plane (H.P.). It is completely penetrated by another cylinder of 35 mm diameter and 70 mm length, such that their axes bisect each other's at right angles and are parallel to vertical plane (V.P.). Draw their projections showing curves of intersection on the two cylinders.
- ii. **Figure 1** shows detail drawing of foot step bearing. Assemble all these parts and draw its following orthographic view:-  
 (a) Full sectional front view                      (b) Top view
- iii. **Figure 2** shows the detail drawing of lathe tool holder. Assemble all these parts and draw its following orthographic views:-  
 (a) Sectional front view                      (b) Top view

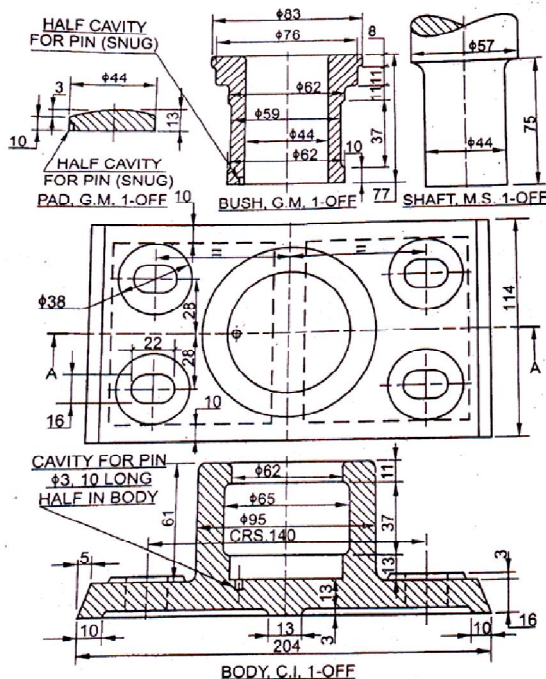
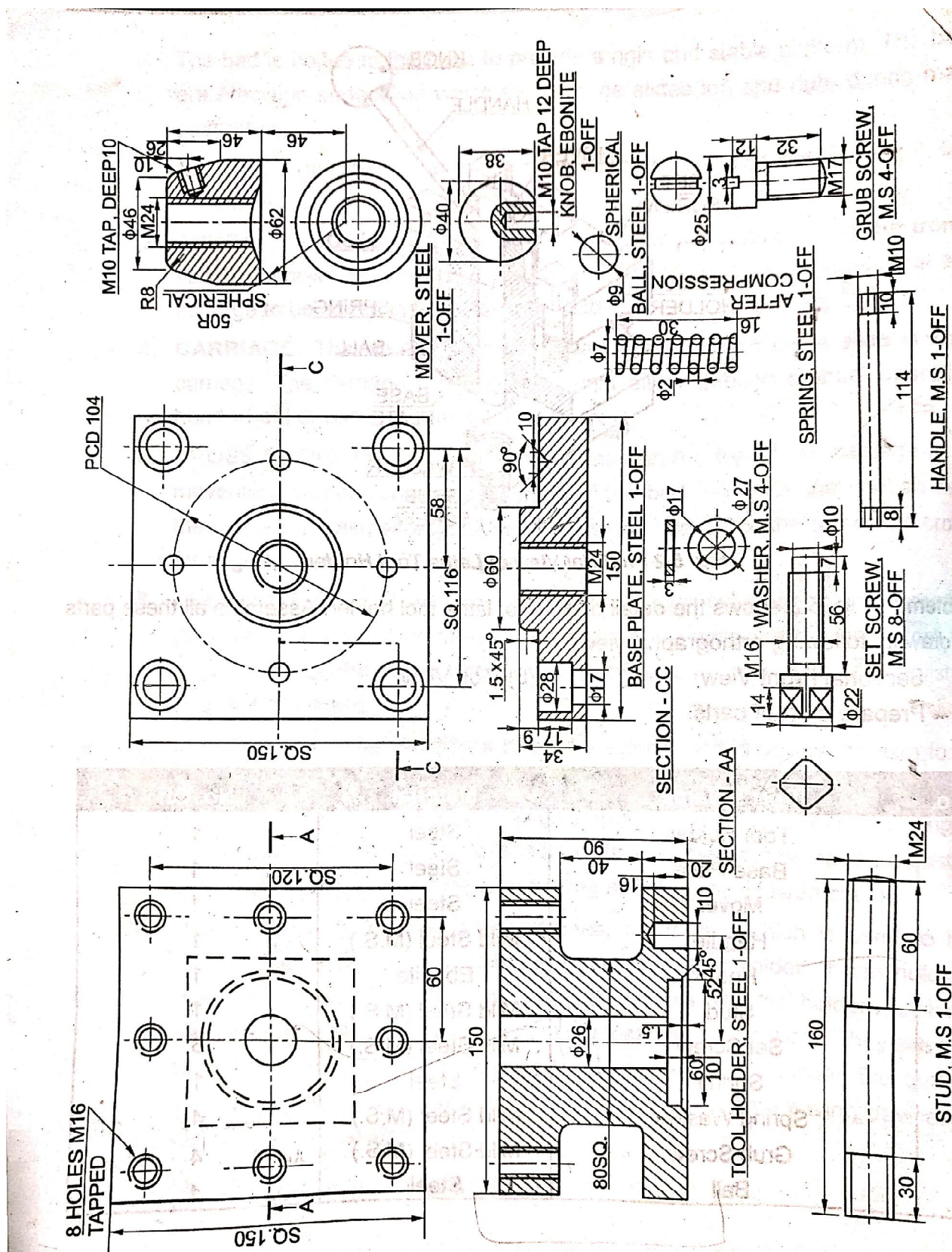


Figure- 1



**Figure 2**