

MECHANICAL ENGINEERING DRAWING-II
4th Exam/Mech./9453/Jun'2021
(For 2018 Batch Onwards)

Duration: 1.15Hrs.

M.Marks:25

Note: Attempt any one question.

1x25=25

- Q1.** Design an edge cam to the following particulars: minimum distance from cam centre to the edge of the follower 60 mm, lift 56mm. The cam is to lift the follower with Simple Harmonic Motion (S.H.M.) during one half of a revolution, then allows it suddenly to drop half way, then to fall with uniform velocity motion (U.V.M.) during the remaining half of the revolution.
- Q2.** To draw the profile of involute teeth for a spur gear having 25 teeth and a module pitch equal to 10 mm, assuming a pressure angle of 20°.
- Q3.** Draw freehand sketch of screw jack. (Front view and Side view)
- Q4. Figure 1** shows the details of drilling jig. Assemble the details and draw the following views:-
 (a) Full sectional front view (b) Top view

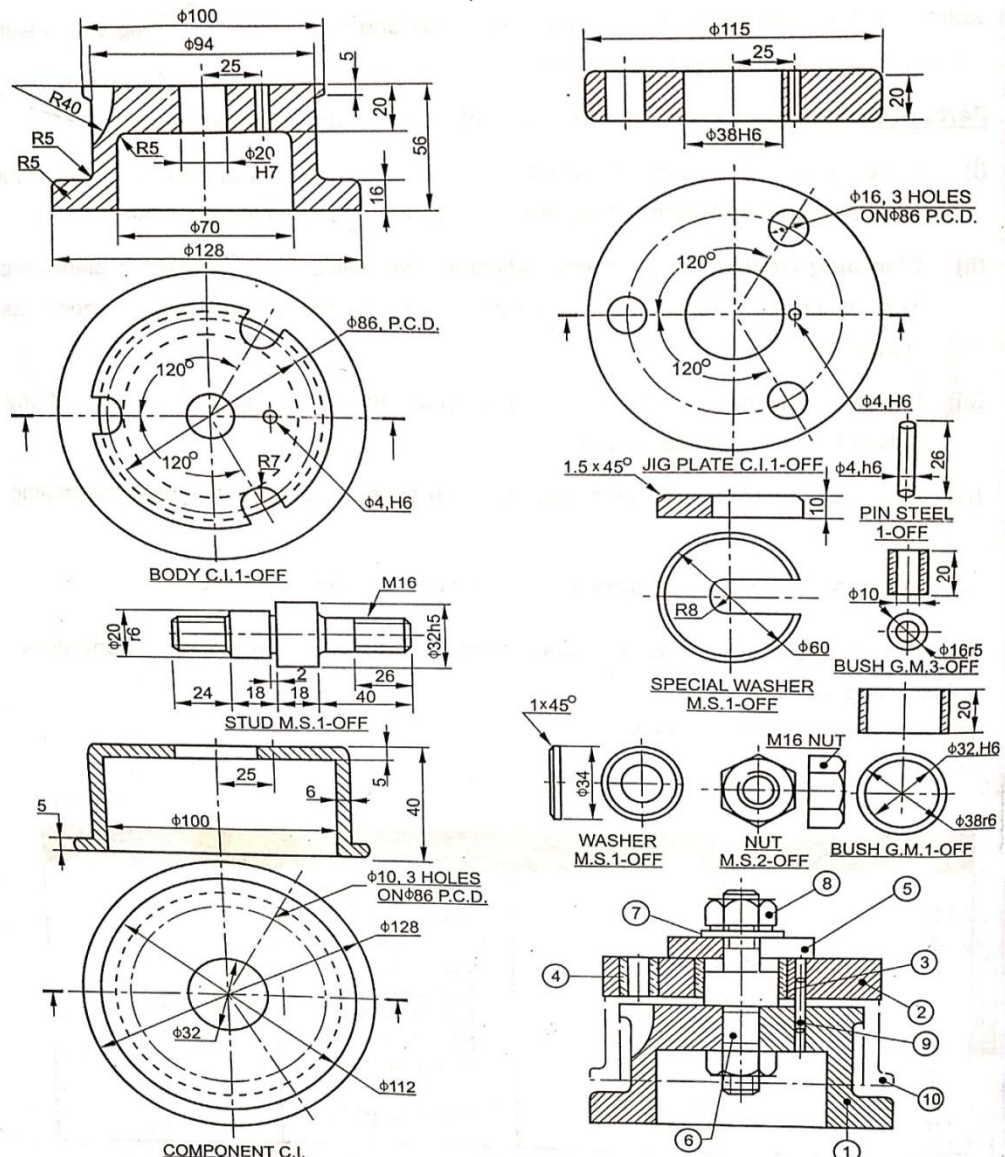


Figure 1