

S.B. Roll No.....

MECHANICAL ENGINEERING DRAWING-I
3rd Exam/Mech./9053/Jan'2022
(For Batch 2018 onwards)

Duration: 1.15Hrs.

M.Marks:25

Note: If any dimension is not clear/Missing, assume proportionate value for the same

SECTION-A

Q1. Attempt any three questions.

3x5=15

- i. What do mean by a term 'Standardization'.
- ii. From dimension $20^{(+0.007,-0.006)}$ find the basic size, maximum limit of size and minimum limit of size.
- iii. Explain briefly different types of fit.
- iv. What are two methods of finding line of intersection between surfaces of two interpenetrating solids?
- v. What are various types of control switches?
- vi. Draw any two types of roller bearing.

SECTION-B

Q2. Attempt any one question.

1x10=10

- a. A horizontal cylinder of base diameter 40 mm interpenetrates a vertical cylinder of base diameter 50 mm. The axis of the horizontal cylinder is 7 mm behind the axis of the vertical cylinder. Both the axis are parallel to V.P. and right angles to each other. Draw the projections and complete the curves of interpenetration.
- b. Draw electrical circuit diagram for operating one bulb, one fan and one tube with independent switches.
- c. Detail drawing and pictorial views of a Universal Coupling is shown in **fig no.1**. Draw half sectional elevation upper half in section.
- d. What are different types of pipes and write their uses.

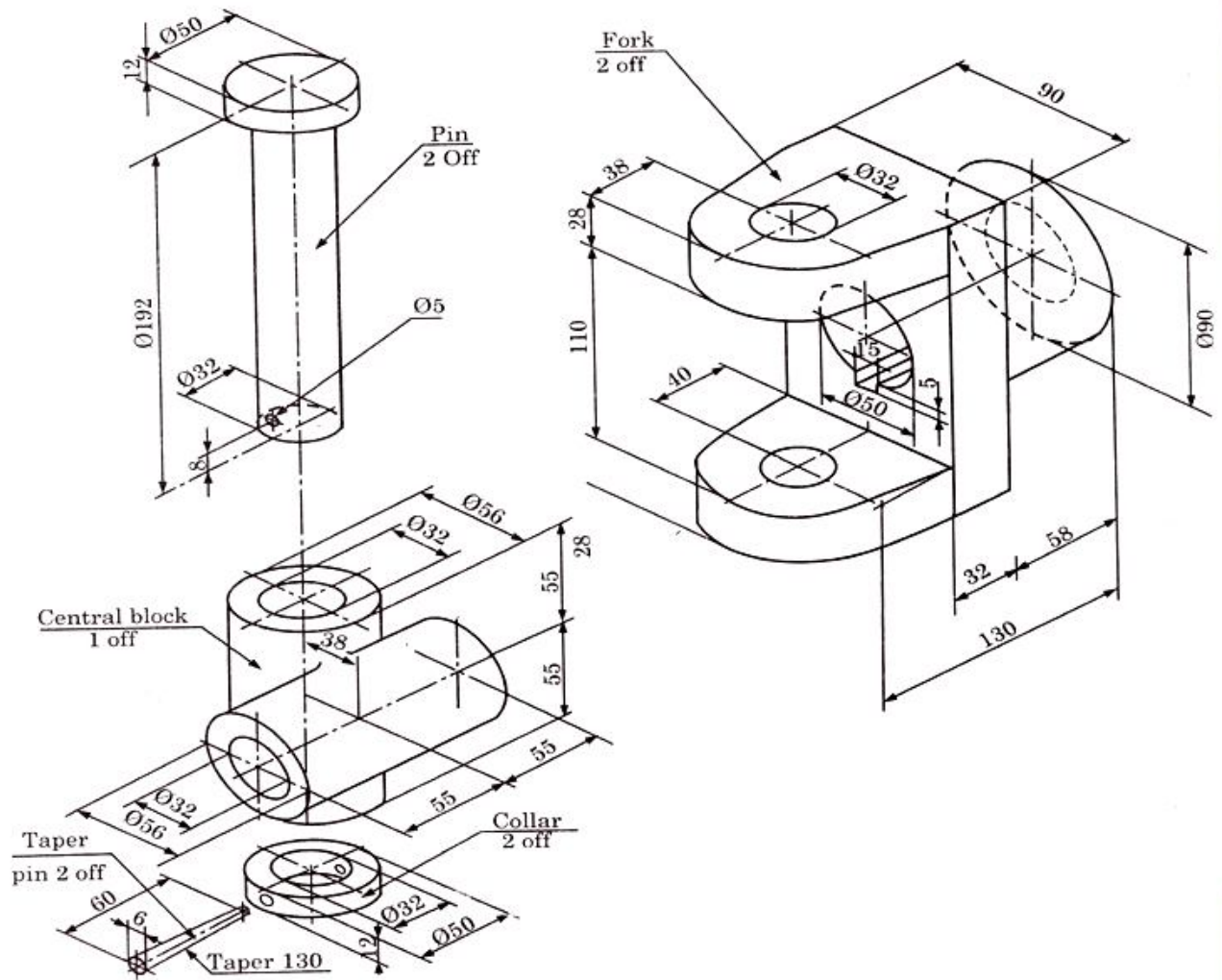


Fig no.1. Pictorial views of a Universal Coupling.