

S. B. Roll. No.....

MECHANICAL ENGINEERING DRAWING-I
3rd Exam/Mech./9053/Jun'2022
(For 2018 Batch Onwards)

Duration: 4Hrs.

M.Marks:75

Note: Attempt any three questions.

3x25=75

Q1. Explain the following terms:-

- a. Tolerance and its types
- b. Types of Fits
- c. Allowance
- d. Clearance
- e. Limits

Q2. A right circular cylinder of 50mm diameter and height 70mm, is resting on its base on horizontal plane (H.P.). It is completely penetrated by another cylinder of 35mm diameter and 70mm length, such that their axes bisect each other's at right angles and are parallel to vertical plane (V.P.). Draw their projections showing curves of intersection on the two cylinders.

Q3. Draw freehand sketch of wall bracket (Front and Top view)

Q4. Figure 1 shows the detail drawing of foot step bearing. Assemble all these parts and draw its full sectional front view and top view.

Q5. Figure 2 shows the detail drawing of expansion pipe joint. Assemble its parts and draw its front view full in section and side view.

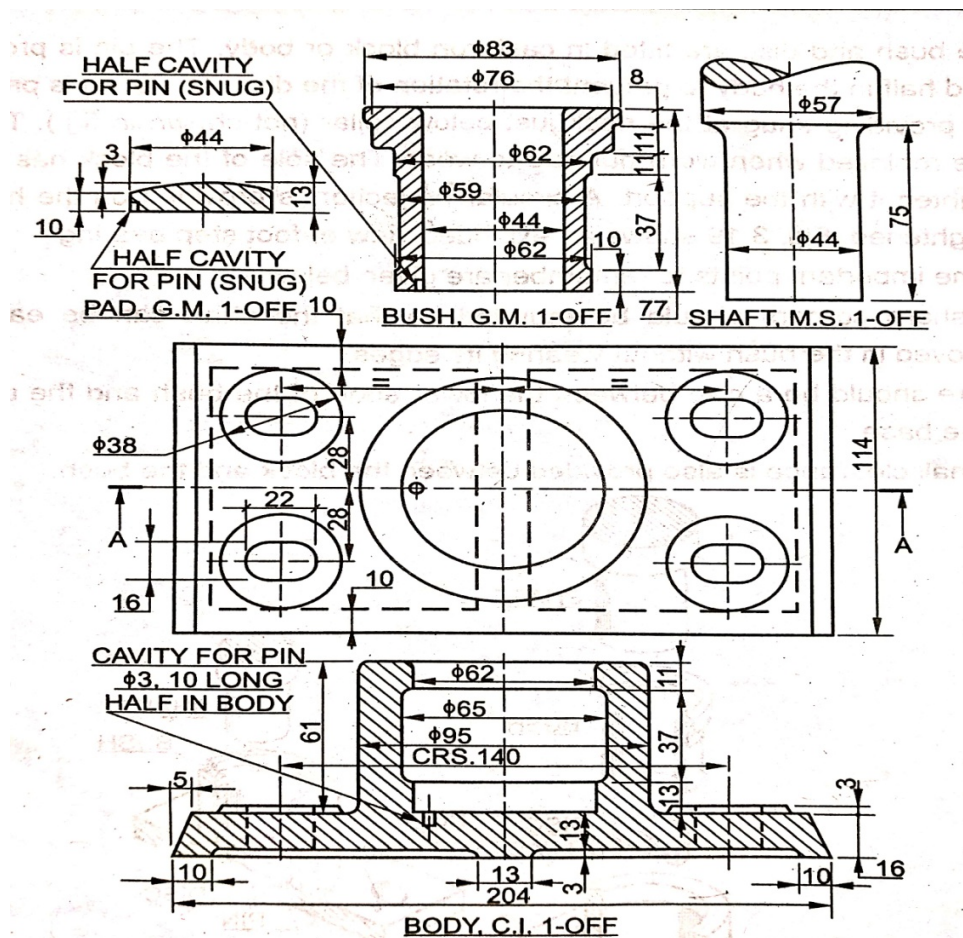


Figure 1

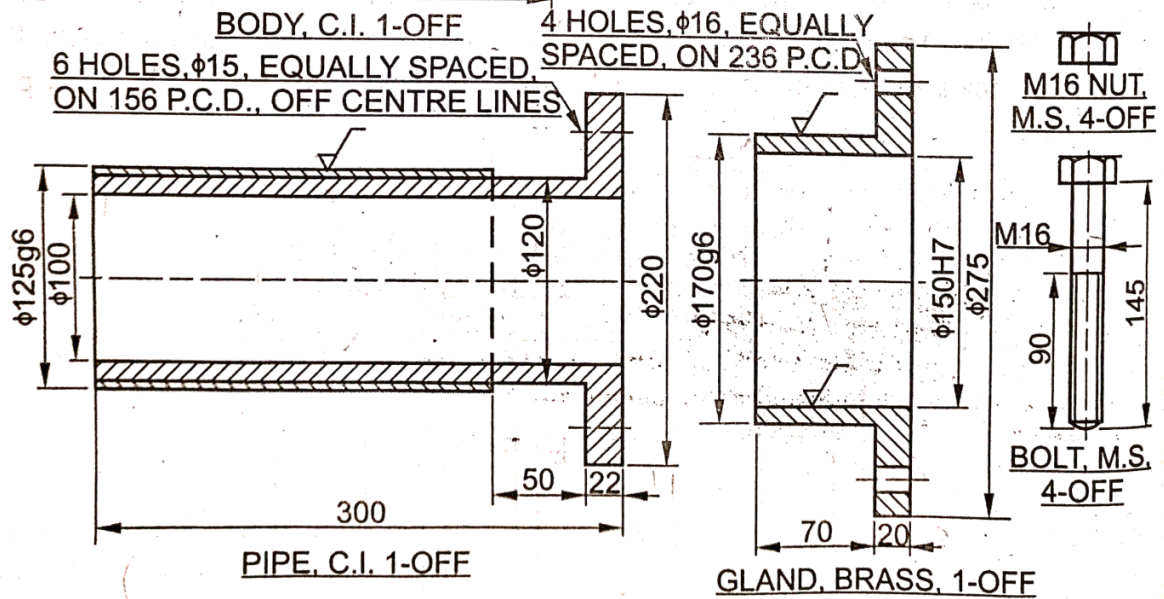
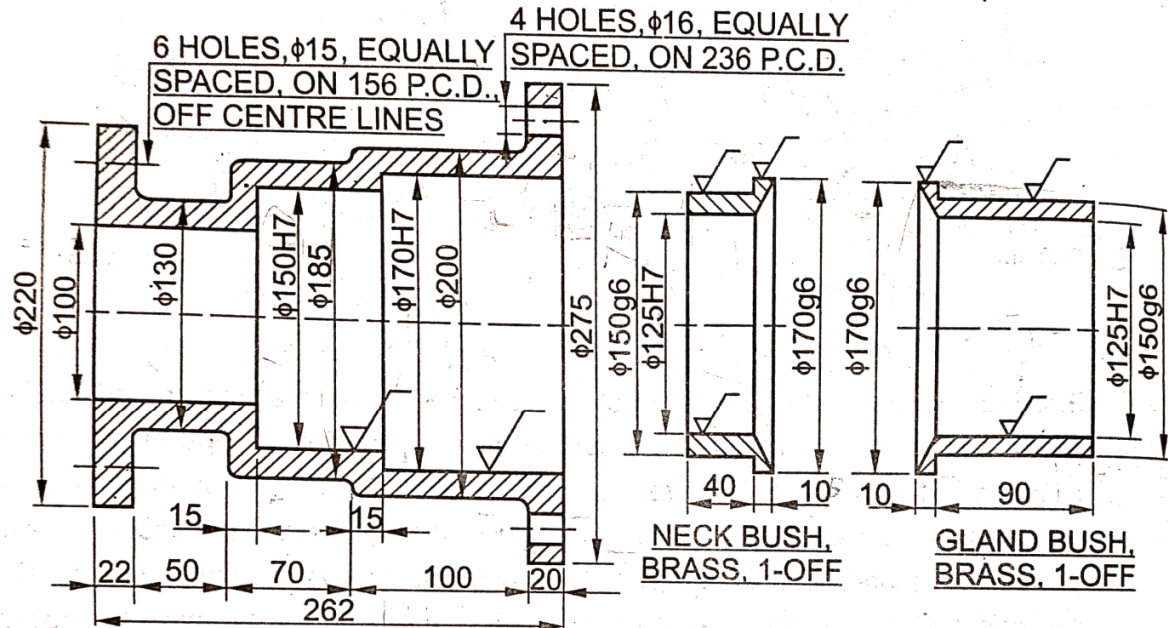


Figure 2